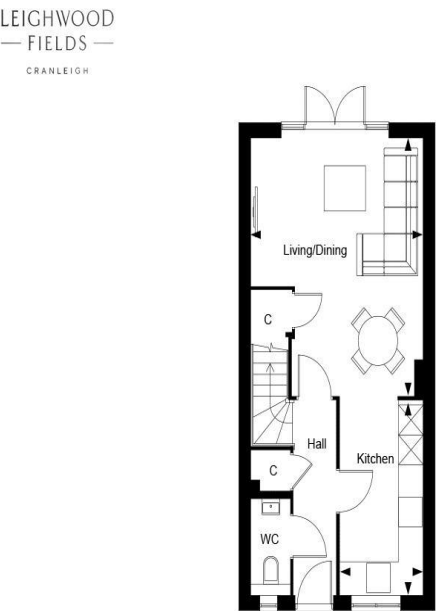




2 Bedroom Homes (Hare or Baxter)
The Maples, Cranleigh, GU6 8WQ
Price: From £450,000

ROGER COUPE
LAND & NEW HOMES

*** High specification new home 850 sq ft * Beautiful two-bedroomed terraced home just minutes from Cranleigh High Street * Open plan or enclosed kitchen design available * Contemporary styled kitchen with Bosch appliances * Principal bedroom with fitted wardrobes and en suite * Second double bedroom with en suite * 10 year NHBC Buildmark scheme and 2 year Berkeley warranty * Downstairs cloakroom and utility cupboard * EPC Rating: B ***



Leighwood Fields, The Maples - The Baxter, Property 269, Ground Floor

Dimensions			Key	
Living/Dining	5.20m x 4.30m	17' 1" x 14' 1"	C	Cupboard
Kitchen	3.98m x 2.08m	13' 1" x 6' 10"		
Total Area	78.96 sq.m	850 sq.ft		

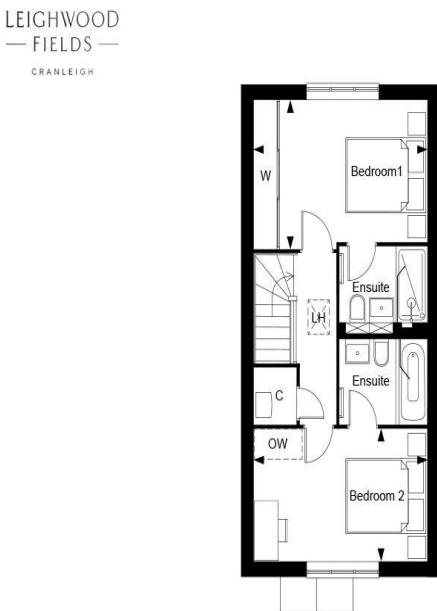
Berkeley
Designed for life



Leighwood Fields, The Maples - The Hare, Property 270, Ground Floor

Dimensions			Key	
Living/Dining	5.18m x 4.30m	17' 0" x 14' 1"	C	Cupboard
Kitchen	3.90m x 2.08m	12' 0" x 6' 10"		
Total Area	78.96 sq.m	850 sq.ft		

Berkeley
Designed for life



Leighwood Fields, The Maples - The Baxter, Property 269, First Floor

Dimensions			Key	
Bedroom 1	4.30m x 2.95m	14' 1" x 9' 8"	C	Cupboard
Bedroom 2	4.30m x 2.62m	14' 1" x 8' 8"	LH	Loft Hatch
			OW	Optional Wardrobe
			W	Wardrobe

Berkeley
Designed for life